



**Summit County Public Health  
Influenza Surveillance Report  
2024 – 2025 Season  
Report #5**



**Public Health**  
Prevent. Promote. Protect.

**Flu Surveillance Weeks 6 & 7 (11/10/2024 to 11/23/2024)  
Centers for Disease Control and Prevention MMWR Weeks 46 & 47**

**Summit County Surveillance Data:**

In **Weeks 6 & 7** of influenza surveillance, influenza-related activity was Moderate<sup>1</sup> in Summit County.

Table 1: Overall Influenza Activity Indicators in Summit County by week				
	Week 6 MMWR 46 N (%) <sup>1</sup>	Week 7 MMWR 47 N (%) <sup>1</sup>	Percent change from previous week	Number of weeks increasing or decreasing
<b>Lab Reports: Influenza</b>				
Test Performed	866	832	-3.9%	1↓
Positive Tests (Number and %)	7 (0.8%)	17 (2.0%)	152.8%	1↑
Influenza A (Number and %)	7 (0.8%)	16 (1.9%)	137.9%	1↑
Influenza B (Number and %)	0 (0.0%)	1 (0.1%)	-	-
<b>Acute care hospitalizations for Influenza:</b>	1	4	300.0%	1↑
<b>Schools absenteeism<sup>2</sup></b>	8.6	8.9	3.1%	4↑
<b>Deaths (occurred in Summit County)</b>				
Pneumonia associated	11	3	-72.7	1↓
Influenza associated	0	0	-	-
COVID-19 associated	2	0	-100.0%	2↓
<b>Emergency room visits (EpiCenter)<sup>3</sup> (Figure 3)**</b>				
Total ED Visits	6971	6443	-7.6%	3↓
Constitutional Complaints	691	652	2.1%	1↑
Fever and ILI	135	130	4.2%	1↑
<p>1) School Absence is for any reason. Percent is from total number of students enrolled. Data was collected from approx. 6 schools or school districts throughout Summit County (n = approx. 30,000 students)</p> <p>2) <b>Notable changes in Epicenter data are the result of a change in reporting practices from at least one of the reporting facilities. **These figures should not be compared to previous year's reports**</b> Notable decrease/ elimination of ER Related data may be the result of a reporting delay and not reflective of actual trends. <b>This will be revised in future reports.</b></p> <p><b>Note:</b> Data is provisional and may be updated as more information is received. Percentages should be interpreted with caution. Small changes in number can result in large changes in percent. When a percentage, or prevalence, is available in this table, the percent change will be calculated from those values</p>				

**Lab reports:**

During week 6 and 7 of influenza surveillance, reporting Summit County facilities performed 1,698 tests, of which 24 had positive results.

**(Figure 4) Note:**

**Influenza data are collected from selected reporting partners and do not represent positivity rates for the entire county.**

**Acute Care**

**Hospitalizations:**

There were 5 reported admissions during week 6 and 7. **Figure 2** displays hospitalizations in Summit County.

**School absenteeism:**

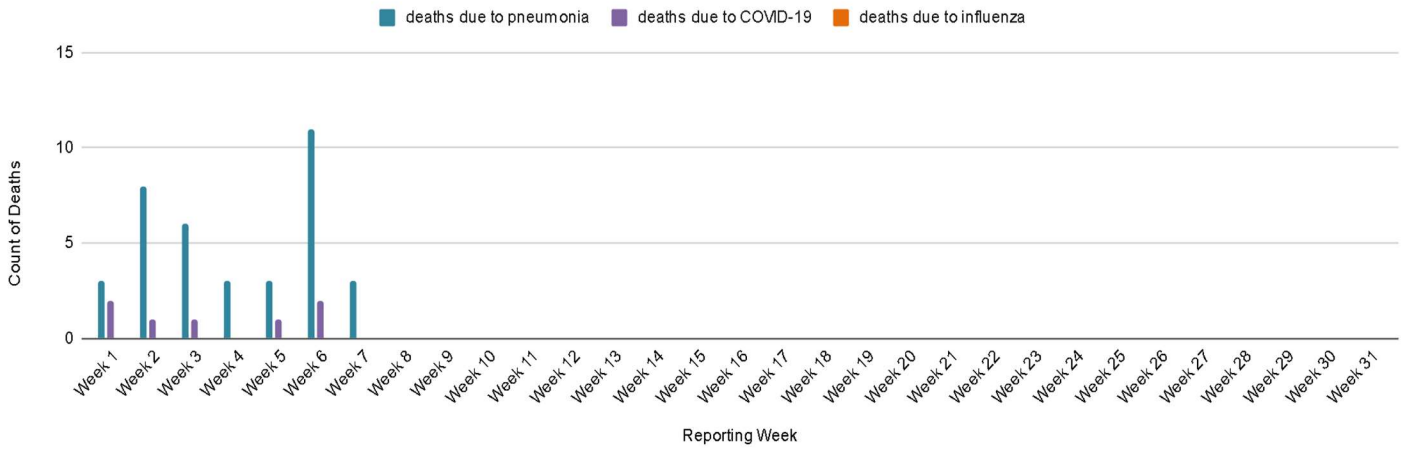
includes absences regardless of reasoning. There was a 3.1% increase in school absences from week 6 to 7.

0 deaths related to influenza, 2 COVID-19 related deaths and 14 pneumonia related deaths occurred in Summit County during week 6 & 7. Pneumonia associated deaths decreased and COVID-19 associated deaths decreased in week 7.

**Figure 1** displays weekly counts of deaths occurring in Summit County associated with pneumonia, COVID-19 and influenza.

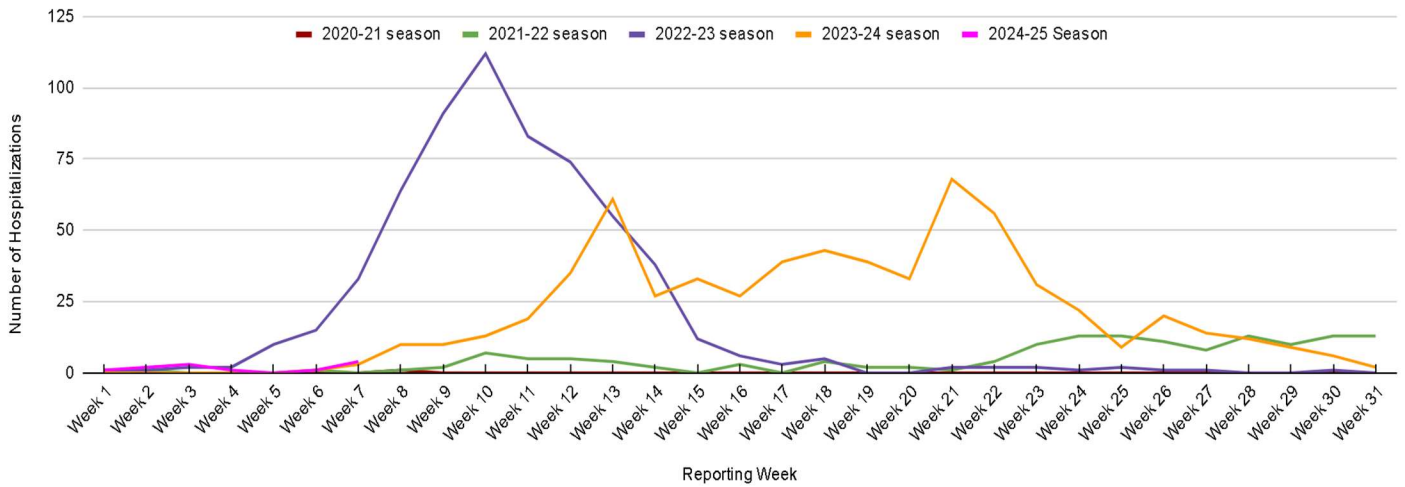
<sup>1</sup>The measure of 'influenza-related activity in Summit County' will be determined based on week to week comparison of table 1 indicators. The scale is as follows: 1/5 indicators increase (very low), 2/5 indicators increase (low), 3/5 indicators increase (moderate), 4/5 indicators increase (high), 5/5 indicators increase (very high).

Figure 1. Weekly Summit County death counts associated with pneumonia, COVID-19 and influenza during 2024-2025 season



**Hospitalizations:** In Week 6, Summit County hospitals reported 1 influenza-associated hospitalization. In Week 7 there were 4 new influenza-associated hospitalizations. **Figure 2** displays weekly confirmed hospitalization counts for Summit County

Figure 2. Summit County weekly influenza-associated hospitalizations, 2024-2025 season and previous four seasons



**EpiCenter** collects and analyzes health related data in real time to provide information about the health of the community. This system tracks ER visits related to constitutional complaints and fever and ILI. **Figure 3** displays the weekly ER visits related to ILI and flu symptoms in Summit County by age group. **\*\*These figures should not be compared to previous year reports. \*\***

Figure 3. Weekly ED visits in Summit County related to Fever + ILI reported in EpiCenter by Age Group, 2024 to 2025 season

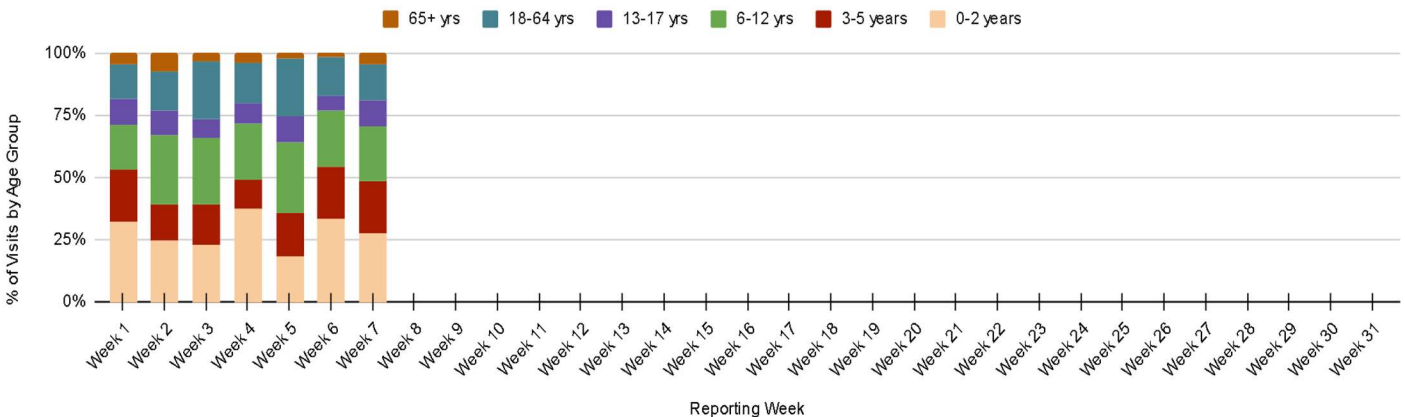
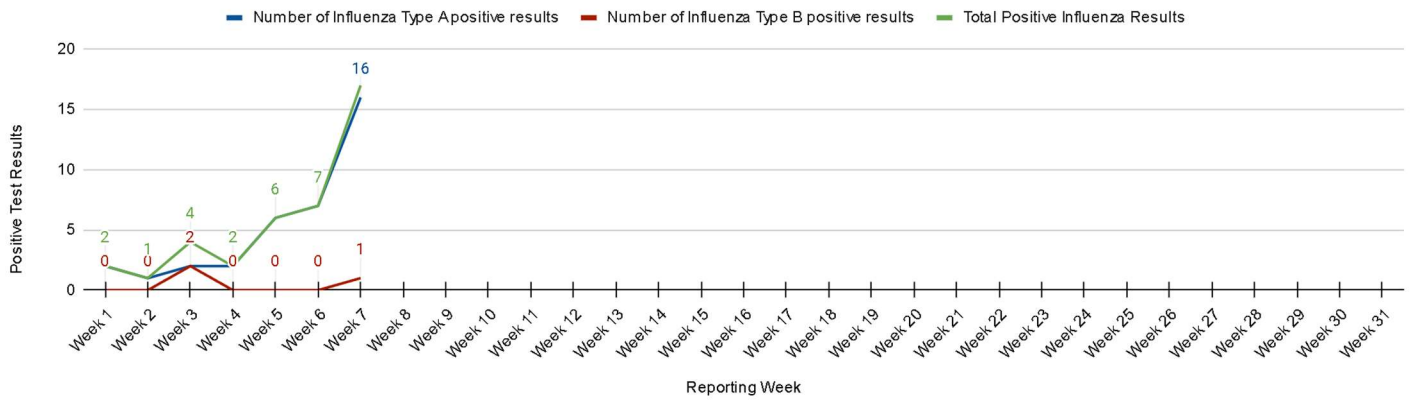


Figure 4. Influenza diagnostic tests with positive results completed by Summit County health facilities, 2024 to 2025 season



## Ohio Influenza Activity: from the Ohio Department of Health:

Current Ohio Activity Level (Geographic Spread) –Low

Activity Indicators (Week ending on 11/23/2024)				
Data Source	Current Week	Percent Change From Last Week	Trend Direction	<div style="display: flex; justify-content: space-between; align-items: center;"> <div style="text-align: left;"> <p>Above 5 yr Average</p> <p>Below 5 yr Average</p> </div> <div style="text-align: center;"> <p>5 yr Average</p> <p>Current Season Percent</p> </div> </div>
<b>% of Outpatient Visits</b> Influenza-like Illness (ILI) Outpatient Data (ILINet Sentinel Provider Visits)	2.94%	-0.34%	↓	
<b>% of Emergency Department (ED) Visits</b> Fever and ILI Specified ED Visits (EpiCenter)	1.80%	4.65%	↑	
<b>% of ED Visits</b> Constitutional ED Visits (EpiCenter)	10.23%	1.69%	↑	
<b>Hospitalizations</b> Confirmed Influenza-associated Hospitalizations (Ohio Disease Reporting System)	18	28.57%	↑	

**Footnotes:**

- **Emergency Department Visits (EpiCenter):** A five-year average, which includes data from the 2017-2018 and 2018-2019 seasons in addition to data from the 2021-2022 through 2023-2024 seasons is displayed in the figure above. EpiCenter data from the 2019-2020 and 2020-2021 influenza seasons have been omitted from the five-year baseline average due to data instability and the effects of the COVID-19 pandemic.
- **Sentinel Providers (ILINet):** A five-year average, which includes data from the 2017-2018 and 2018-2019 seasons in addition to data from the 2021-2022 through 2023-2024 seasons is displayed in the figure above. ILINet data from the 2019-2020 and 2020-2021 influenza seasons have been omitted from the five-year baseline average due to data instability and the effects of the COVID-19 pandemic.
- **Influenza-associated Hospitalizations (ODRS):** A five-year average, which includes data from the 2017-2018 and 2018-2019 seasons in addition to data from the 2021-2022 through 2023-2024 seasons is displayed in the figure above. Influenza-associated hospitalization data from the 2019-2020 and 2020-2021 influenza seasons have been omitted from the five-year baseline average due to data instability and the effects of the COVID-19 pandemic.

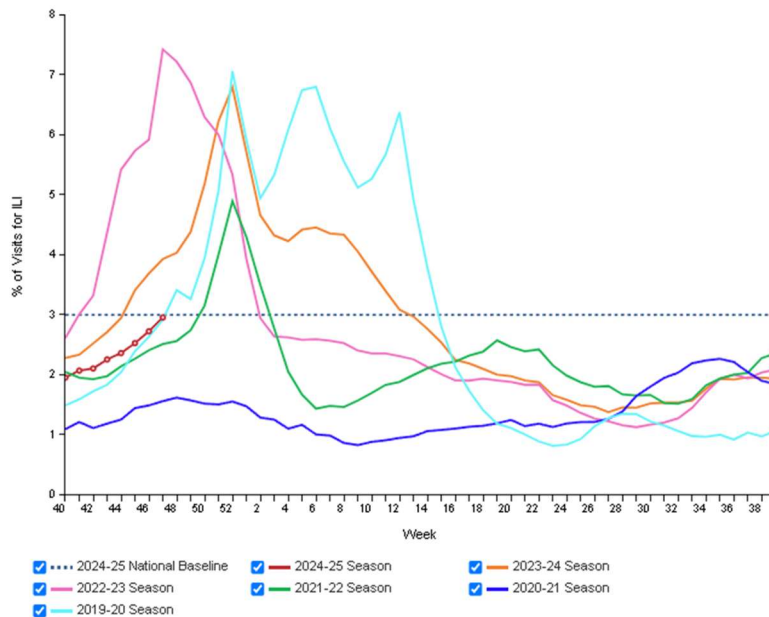
# Ohio Department of Health Seasonal Influenza Activity Summary

Source: <https://odh.ohio.gov/know-our-programs/seasonal-influenza/influenza-dashboard>

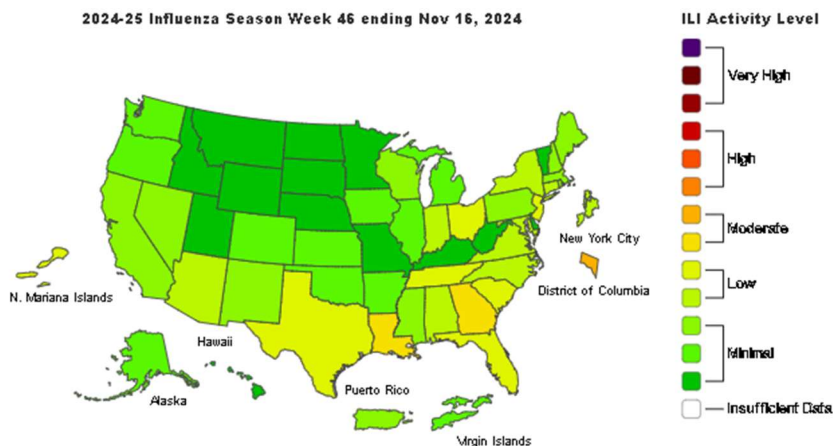
## National Surveillance: from Centers for Disease Control and Prevention (CDC): National Outpatient Illness Surveillance:

Nationally, during Week 47, 3.0% of patient visits reported through ILINet were due to respiratory illness that included fever plus a cough or sore throat, also referred to as ILI. This week's percentage increased (change of > 0.1 percentage points) compared to Week 46. ILI activity has been trending upward for the past five weeks. The percentage of visits for ILI increased (change of > 0.1 percentage points) in regions 3, 6, 8, 9, and 10 and remained stable (change of ≤ 0.1 percentage points) in all other regions (1, 2, 4, 5, and 7) in Week 47 compared to Week 46. Nationally and in HHS regions 1 and 6, activity is at their respective baselines, while regions 3 and 4 are above their respective baselines this week. Multiple respiratory viruses are co-circulating, and the relative contribution of influenza virus infections to ILI varies by location.

**Figure 5. Percentage of Outpatient Visits for Respiratory Illness reported By the U.S. Outpatient Influenza-like Illness Surveillance Network (ILINet), Weekly National Summary, 2024-2025 and Selected Previous Seasons.**



**Figure 6. Influenza-like illness (ILI) activity level indicator determined by data reported to ILINet**



Source: <https://www.cdc.gov/fluview/surveillance/2024-week-46.html>

## Global Surveillance:

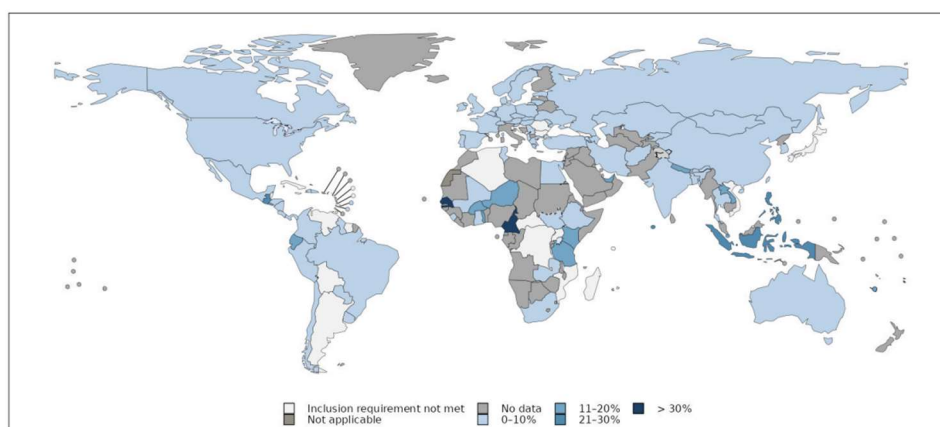
Influenza Update N° 502 Published 20 November 2024 | For reporting Week 45, ending 10 November 2024

### Summary

#### Influenza

- In the Northern hemisphere, influenza activity in temperate countries remained at interepidemic levels. Elevated activity was noted in a few countries in Western Africa (due to B viruses), Middle Africa (due to A(H3N2)), Western Asia (due to A(H1N1)pdm09), Southern Asia (due to A(H1N1)pdm09 and B viruses), and South East Asia (due to A viruses). Activity was similar or declined across all reporting countries compared with last week's report.
- In the Southern hemisphere, influenza activity was elevated in one country in Tropical South America (due mostly to B viruses) and in Eastern Africa (due to A(H1N1)pdm09 and B viruses). Activity was similar or declined across all reporting countries.

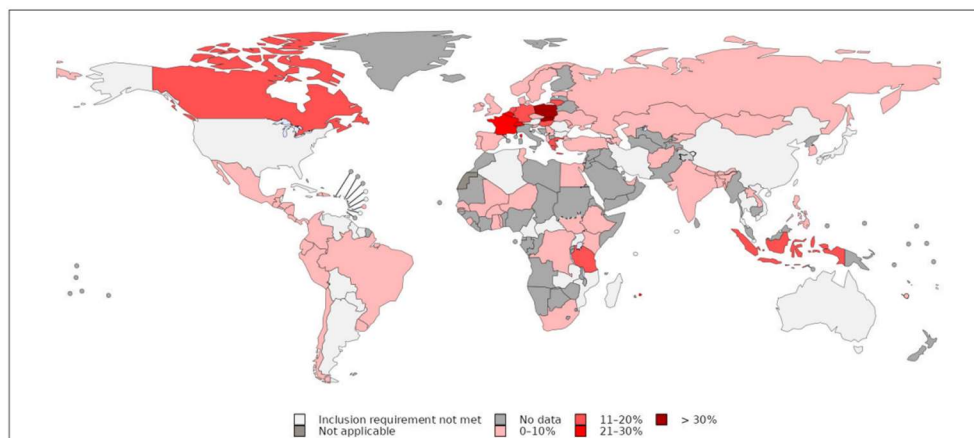
#### Influenza activity



#### SARS-CoV-2

- SARS-CoV-2 activity remained elevated in many countries in Europe and in a few countries in North America, the Caribbean, Temperate South America, Eastern Africa, and South East Asia. Increased activity was reported from countries in Eastern Europe, the Caribbean, Temperate South America, and South East Asia, but declined or was similar in all other reporting countries.

#### SARS-CoV-2 activity



Source: <https://www.who.int/publications/m/item/influenza-update-n--502>

**About this report:** Reporting agencies include labs, hospitals, and schools. Agencies are distributed throughout Summit County and report different indicators of flu activity including total lab tests, numbers of positive tests and type, school absences, and influenza like illness (ILI). Number of deaths associated with influenza and pneumonia are gathered from the Summit County Office of Vital Records death listings. Emergency room visits for complaints related to influenza are obtained by syndromic surveillance system (Epicenter).

**Special thanks to all agencies who report Influenza related data weekly.**

---

Reporting from participants may not be complete each week. Numbers may change as updated reports are received. For questions, please contact Julie Zidones at the Summit County Public Health Communicable Disease Unit (330-375-2662 or [cdu@schd.org](mailto:cdu@schd.org)). This report was issued on December 3, 2024.