



Summit County COVID-19 Weekly Report

MMWR Week 36 (9/5 – 9/11/2021); CDC Data Tracker (9/6 – 9/12/2021)



Public Health
Prevent. Promote. Protect.

CDC Community Indicators (see page 4 for explanation of indicators)	8/23 to 8/29/2021	8/31 to 9/6/2021	9/6 to 9/12/2021	Current status or data trend
Total new cases in past 7 days (per 100,000 residents)	179	207	247	Increasing ↑
RT-PCR testing positivity rate (past 7 days)	10.0%	10.6%	11.4%	Increasing ↑
Community Transmission Level	HIGH	HIGH	HIGH	HIGH
Confirmed COVID-19 hospital admission rate (per 100 beds)	4.0	5.7	6.6	Increasing ↑
ICU bed occupancy, total	89%	88%	89%	Sustained
ICU bed occupancy, confirmed COVID-19 cases	18%	18%	23%	Increasing ↑
Fully vaccinated rate, total population	52.1%	52.6%	53.1%	
Fully vaccinated rate, 12-17 year old	39.2%	40.7%	42.0%	
Fully vaccinated rate, 18 years old and older	62.2%	62.7%	63.1%	
Fully vaccinated rate, 65 years old and older	81.1%	81.4%	81.6%	
CDC Area of Concern category	SUSTAINED HOTSPOT	SUSTAINED HOTSPOT	SUSTAINED HOTSPOT	SUSTAINED HOTSPOT

COVID-19 indicators	8/15 to 8/28/2021	8/22 to 9/4/2021	8/29 to 9/11/2021	Current Status
14 day new case rate, by date reported (per 100,000 residents)	291.9	393.9	456.7	Increasing ↑
14 day new case rate, by onset or testing date (per 100,000)	287.2	392.4	444.9	Increasing ↑
	8/22 - 8/28/2021	8/29 - 9/4/2021	9/5 - 9/11/2021	Current Status
School-associated (including sports) COVID-19 cases	98	216	308	Increasing ↑
Pediatric case rate (per 100,000 residents aged 17 and under)	139.7	241.3	299.7	Increasing ↑
MIS-C associated with COVID-19 (Summit Co. cases reported)	0	0	0	18 cases total

Sources: CDC COVID-19 Data Tracker and Ohio Disease Reporting System (ODRS)

Summit County COVID-19 Case Data by Age, 3/11/20 to 9/11/21			
	Cases	Hospitalizations	Deaths
Count	54,352	4,920	1224
Range	< 1 year to 106 years	< 1 year to 103 years	20 to 103 years
Average	42.7	62.5	78.4

Source: Ohio Disease Reporting System (ODRS)

Full report (including Summit County COVID-19 indicator data and definitions) can be obtained here:

<https://www.scph.org/covid/maps-data>

Data is provisional and subject to change

Date prepared: September 16, 2021

Prepared by: Summit County Public Health Communicable Disease Unit (communicabledisease@scph.org)

This page was intentionally left blank



**Summit County Public Health
 COVID-19 Community Surveillance Report
 Report #53
 Centers for Disease Control and Prevention
 MMWR Week 36: September 5 to 11, 2021**



Public Health
 Prevent. Promote. Protect.

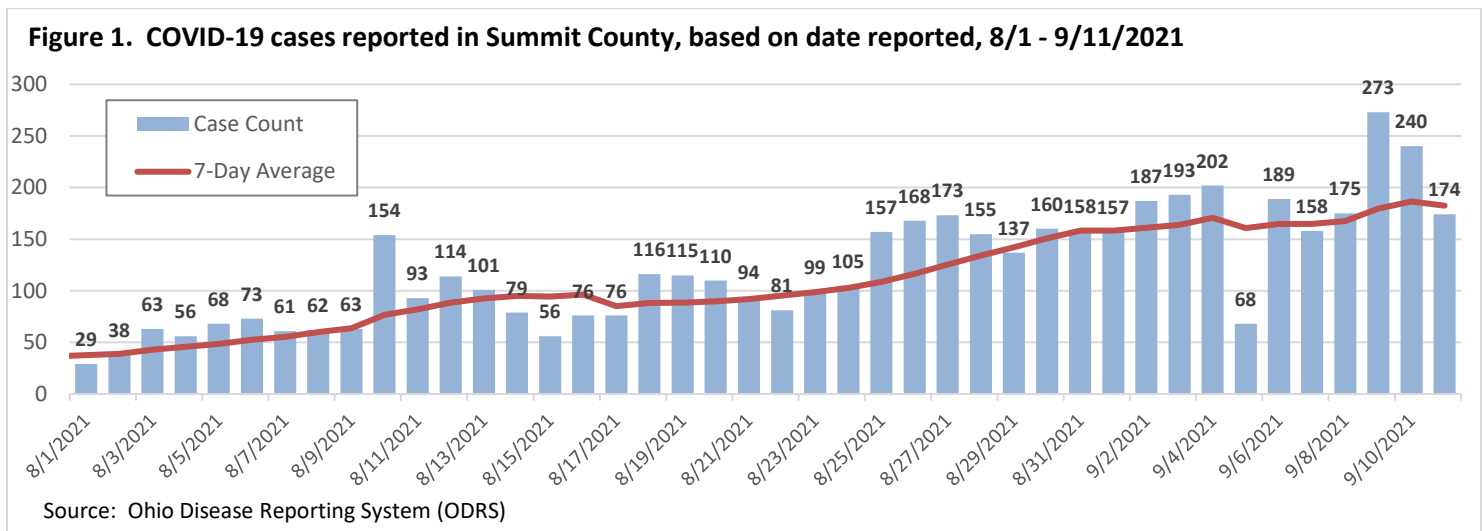
COVID-19 Case Data: Public health data can be presented in different ways. For COVID-19 case reporting, **Summit County Public Health (SCPH)** reports case count data by the date each case is reported. This provides SCPH and community partners a real-time picture of case reporting and public health response, such as case interviews, contact tracing, outbreak investigations and mitigation efforts. Summit County reports confirmed and probable cases that are active cases at time of reporting, and does not include cases reported due to positive antibody test results.

The **Ohio Department of Health (ODH)** reports data the date that symptoms were first experienced (onset date) for all confirmed and probable cases. The case graph by onset date (also known as an epidemiological curve) provides valuable information on the dynamics of disease transmission and outbreaks. However, the data in the most recent two weeks of the onset date curve will be incomplete, as many of the cases first experiencing symptoms on those dates have not yet been diagnosed and/or reported to the health department.

In this report, graphs for case counts, hospitalizations and deaths include data for the past 6 weeks. Graphs with data for the entire pandemic are included at the end of the report. In the graphs with daily data, 7 day averages are calculated to correct for data variability

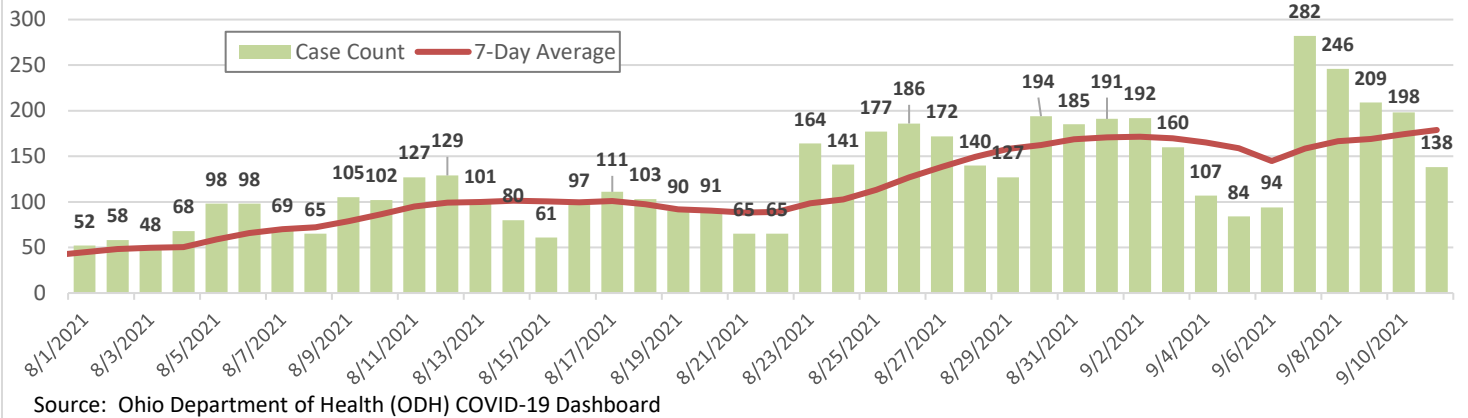
Summit County Surveillance Data:

COVID-19 Case Data: Data based on the reporting date (Figure 1) indicates that the 7-day average daily count was 6 cases per day on July 6; this was the lowest 7-day average in 2021. Since then, the 7-day average steadily increased to 182 cases per day by September 11. The increasing case rates in Summit County indicates that widespread community transmission continues.



Based on symptom onset date (Figure 2), the 7 day average daily count was 6 cases per day on June 27; this was the lowest 7 day average in 2021. Since then, the 7-day average steadily increased to 179 cases per day by September 11. Data with a case onset after August 27 are considered to be incomplete and trend determinations generally cannot be made, but the continued increase in case onset rates in Summit County indicates that widespread community transmission continues.

Figure 2. COVID-19 cases reported in Summit County, based on symptom onset date, 8/1 - 9/11/2021



Weekly cases by age distribution: Figure 3 and 4 display the weekly age distribution of new cases reported since May 30, 2021, based on date reported. Since March 2020, children below the age of 18 accounted for 10.0% of cases, young adults aged 18 to 24 accounted for 13.1% of cases, and older adults aged 65 years or older accounted for 16.2% of cases. **During Week 36 (9/5 – 9/11/2021), children accounted for 26.7% of the cases reported and young adults accounted for 11.0% of cases.**

Figure 3. Age distribution of COVID-19 cases and weekly totals in Summit County, by MMWR week

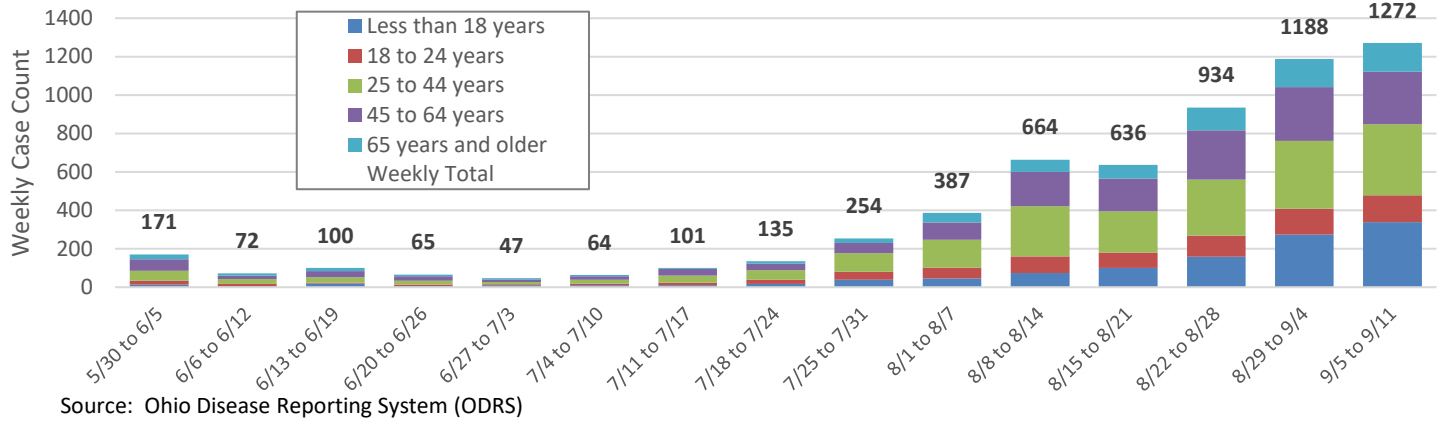
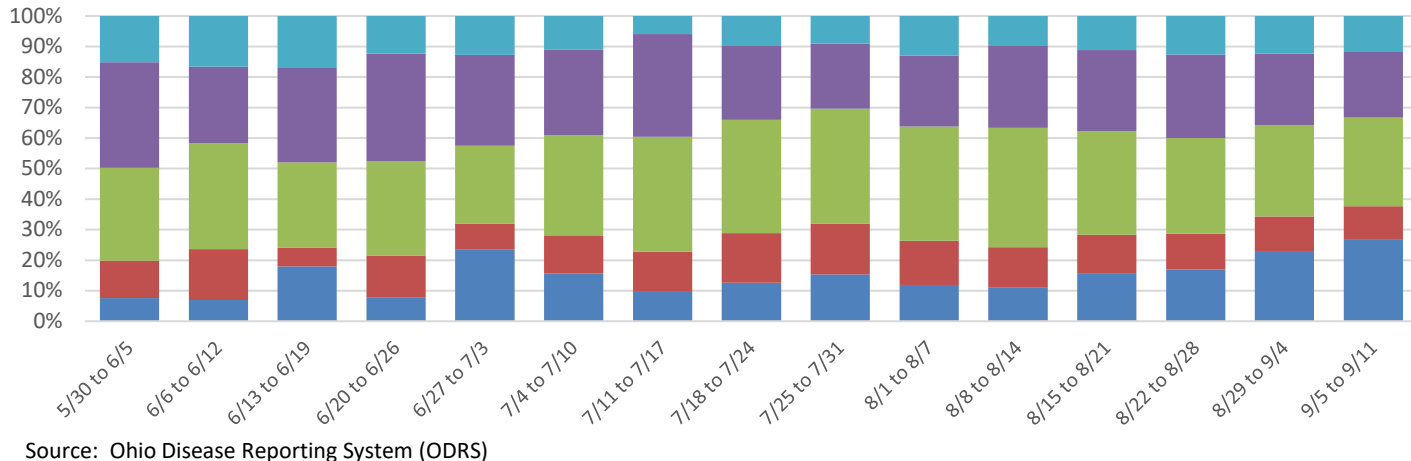


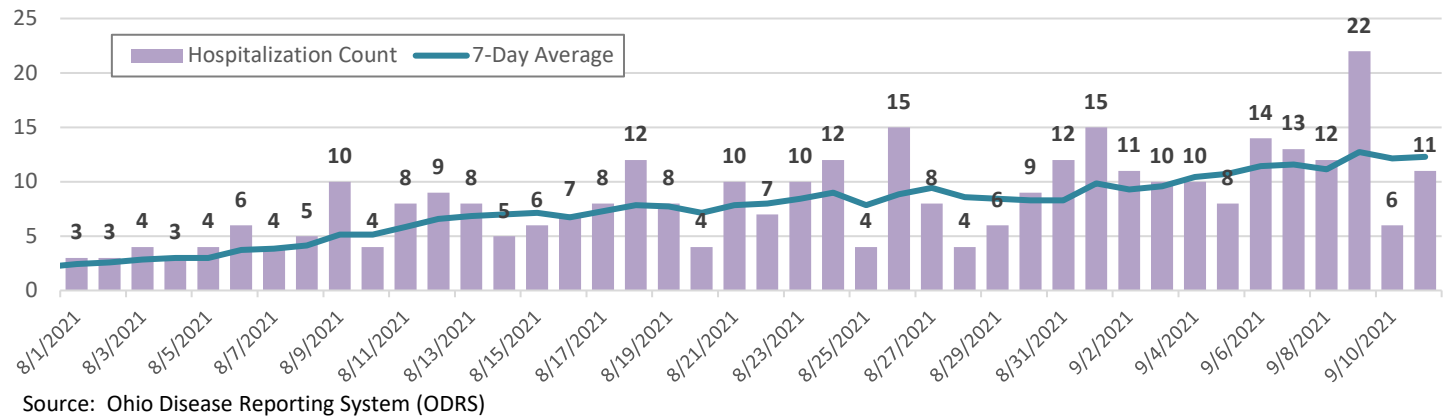
Figure 4. Age distribution of COVID-19 cases by percent in Summit County, by MMWR week



Summit County Hospitalization and Death data:

Due to the progression of the COVID-19 illness and reporting delays, *hospitalization data in the previous two to four weeks may be incomplete*. On July 4, the 7 day average for hospitalizations was 0.7 admissions per day, the lowest rate of 2021. The hospitalization rate remained low in July, and did not exceed 2.1 admissions per day through July 31. Average hospitalizations increased to 12.7 admissions per day by September 9.

Figure 5. COVID-19 hospitalizations reported in Summit County, based on admission date, 8/1 to 9/11/2021



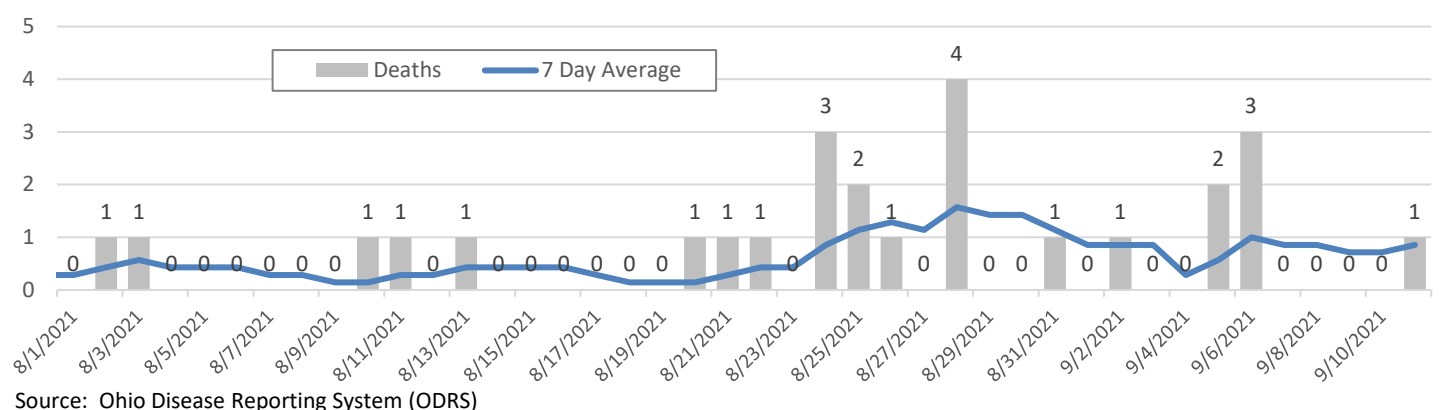
Although the Ohio Department Health recently changed its COVID-19 death reporting to include confirmed cases only, Summit County Public Health will continue to include probable cases in its death statistics. Case counts and hospitalization counts also include confirmed and probable cases. Table 1 lists the number of COVID-19 deaths by month since the beginning of the pandemic. *In December, 2020, there were 315 deaths reported due to COVID-19, 188 deaths in January, and 89 deaths in February.* 51 COVID-19 deaths were reported in March 2021, 45 deaths were reported in April 2021, and 48 deaths were reported in May. 17 deaths were reported in June, 9 deaths were reported in July, and 19 deaths were reported in August. 7 deaths were reported through September 11. COVID-19 deaths can occur up to several weeks or months following the initial diagnosis and test result.

Table 1. Summit County COVID-19 deaths by month

2020		2021	
		January	188
		February	89
March	10	March	51
April	87	April	45
May	90	May	48
June	21	June	17
July	11	July	9
August	24	August	19
September	17	September (1-11)	7
October	31	October	
November	145	November	
December	315	December	

Source: Ohio Disease Reporting System (ODRS)

Figure 6. COVID-19 deaths reported in Summit County, based on date of death, 8/1 to 9/11/2021



MIS-C Cases in Summit County

According to the CDC, **Multisystem inflammatory syndrome in children (MIS-C)** is a condition where different body parts can become inflamed, including the heart, lungs, kidneys, brain, skin, eyes, or gastrointestinal organs. Children with MIS-C may have a fever and various symptoms, including abdominal (gut) pain, vomiting, diarrhea, neck pain, rash, bloodshot eyes, or fatigue. Although we cannot yet definitively say what causes MIS-C, many children with MIS-C tested positive for the SARS-CoV-2 virus, had COVID-19 symptoms, and/or had been around someone with COVID-19.

Summit County: As of September 11, 2021, 18 cases of MIS-C have been reported in Summit County (16 confirmed and 2 suspected status). The age range of these cases is 4 to 18 years old, with an average age of 9.7 years. All of these cases were hospitalized, with an average stay of 5.6 days.

For more information about MIS-C, refer to: <https://www.cdc.gov/mis-c/index.html>

New cases per capita (past 14 days)

The 14-day population case rates based on symptom onset increased to 444.9 cases per 100,000 during the latest reporting period of September 5 to 11, 2021. The two previous reporting periods were at 287.2 and 392.4 cases per 100,000, respectively.

	Table 2. Population Case Rate (previous 14 days)		
	8/15 to 8/28/21	8/22 to 9/4/21	9/5 to 9/11/21
Number of cases based on date reported:	1579	2131	2471
Population case rate	291.9	393.9	456.7
Number of cases based on symptom onset:	1554	2123	2407
Population case rate	287.2	392.4	444.9

Source: Ohio Disease Reporting System (ODRS) and Ohio Public Health Alert System (OPHAS)

CDC COVID-19 Data Tracker Indicators

CDC releases two community profile reports per week, the 7-day range of CDC data that best matches the MMWR week dates will be reported in this weekly report. **Selected CDC indicators are included in this report, current status for the past three reporting weeks are summarized on the front page.**

Total new cases in past 7 days, per 100,000 residents

Presenting the 7 day new case total as a rate allows for counties with different population sizes to be appropriately compared.

During the latest reporting period (9/6 to 9/12/2021), the 7-day new case rate in Summit County was 247 cases per 100,000 residents.

RT-PCR testing positivity rate

Testing data represents RT-PCR testing and do not include antigen or serology tests. The testing positivity rate is calculated from data from the COVID-19 Electronic Lab Reporting (CELR) state health department-reported data and Federal Direct Report testing data.

The average positivity rate during the latest reporting period (9/4 to 9/10/2021) increased to 11.4%.

Community transmission level

Level of Community Transmission uses two indicators for categorization (1. Total number of new cases per 100,000 persons within the last 7 days and 2. Percentage of positive diagnostic and screening nucleic acid amplification tests (NAAT) during the last 7 days). If the two indicators suggest different transmission levels, the higher level is selected.

During the latest reporting period, the community transmission remained at: High / Red.

Table 3. CDC Data Tracker indicator categories:

	DARK GREEN	LIGHT GREEN	YELLOW	ORANGE	LIGHT RED	RED
Cases per 100k - 7-day total	4 or less	5 – 9	10 – 49	50 – 99	100 – 199	200 or more
Viral (RT-PCR) lab test positivity rate - 7 day average	2.9% or less	3.0% – 4.9%	5.0% – 7.9%	8.0% – 9.9%	10.0% – 14.9%	15.0% or more
Confirmed COVID-19 admissions per 100 inpatient beds - 7-day total	1.0 or less	1.1 – 3.0	3.1 – 5.0	5.1 – 10.0	10.1 – 15.0	15.1 or more
% ICU beds occupied	No category 0% – 80%				81% – 90%	91% or more
% ICU beds occupied by COVID-19 patient	3% or less	4% – 7%	8% – 12%	13% – 15%	16% – 20%	21% or more

Table 4. Community Transmission Levels

	LOW	MODERATE	SUBSTANTIAL	HIGH
Cases per 100k - 7-day total	0 – 9	10 – 49	50 – 99	100 or more
Viral (RT-PCR) lab test positivity rate – 7 day average	0.0% – 4.9%	5.0% – 7.9%	8.0% – 9.9%	10.0% or more
Combined Transmission Level	<i>higher of cases per 100k and test positivity</i>			

Hospitalization Utilization Rates

Hospital data are reported to HHS either directly from facilities or via a state submission.

Confirmed COVID-19 hospital admission rate

Confirmed/suspected admissions is the sum of reported values for all hospitals reporting in the given timeframe.

Confirmed/suspected COVID-19 admissions in the last 7 days divided by the total inpatient beds in that time period, as calculated above.

During the latest reporting period (9/5 to 9/11/2021), the 7-day average hospitalization rate for confirmed COVID-19 cases rose to 6.6 admissions per 100 hospital beds.

ICU bed occupancy (total and COVID-19)

Utilization metrics for inpatient beds, staffed adult ICU beds, and ventilators calculate the average utilization in the geography for the week. Resources used by COVID-19 patients are as a percentage of total resources (rather than as a percentage of used resources).

During the latest reporting period (9/5 to 9/11/2021), the 7-day average for total and COVID-19 adult ICU occupancy was 89% and 23%, respectively.

County vaccination rates

CDC vaccination data represents all vaccine partners including jurisdictional partner clinics, retail pharmacies, long-term care facilities, dialysis centers, Federal Emergency Management Agency and Health Resources and Services Administration partner sites, and federal entity facilities.

As of September 13, 2021, the fully vaccinated rates in Summit County were: Total population: 53.1%, Ages 12 – 17 years: 42.0%, Ages 12 and over: 61.4%, Ages 18 and over: 63.1%, Ages 65 and over: 81.6%.

CDC area of concern continuum

The Areas of Concern Continuum (AOCC) is used to describe communities as they progress through stages of the epidemic. There are 7 possible AOC classifications based on current and recent history of case and testing data for the location:

Table 5. CDC Areas of Concern categories

Low Burden	communities with minimal activity
Moderate Burden	communities with moderate disease activity
Emerging Hotspot	communities with a high likelihood to become hotspots in the next 1-7 days
Hotspot	communities that have reached a threshold of disease activity considered as being of high burden
Sustained Hotspot	communities that have had a high sustained case burden and may be higher risk for experiencing healthcare resource limitations
High Burden –Resolving	communities that were recently identified as hotspots and are now improving
Moderate Burden –Resolving	communities that have a moderate level of burden, but are demonstrating improvement
Data Sources: CDC Aggregate county data; unified testing dataset; US Census 2019	

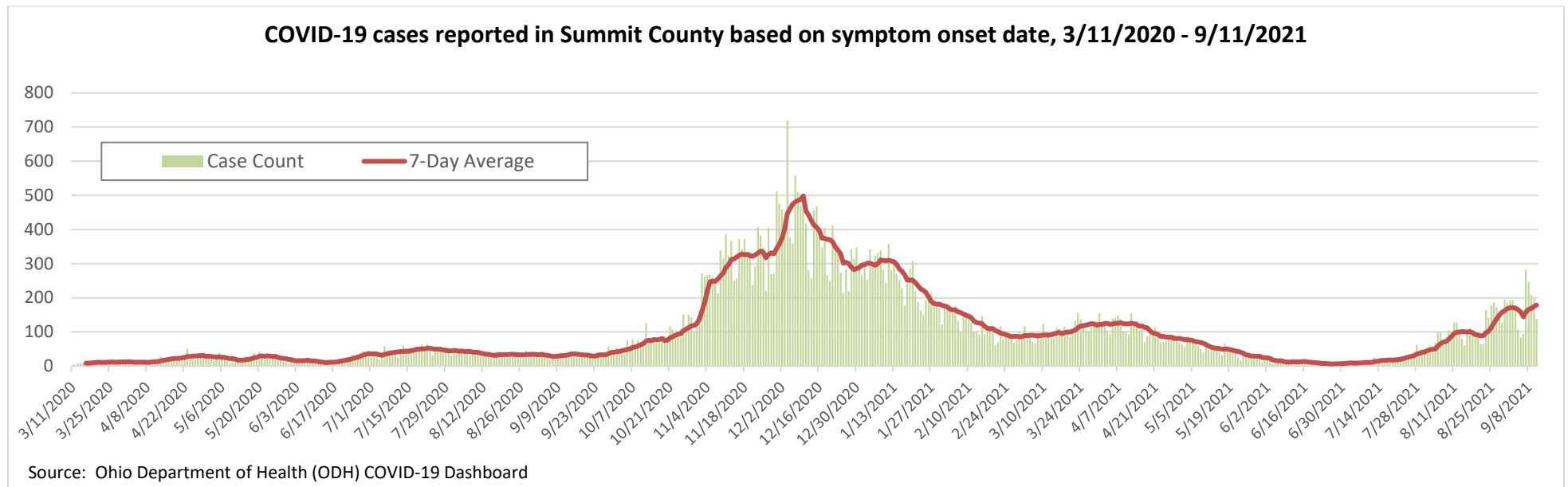
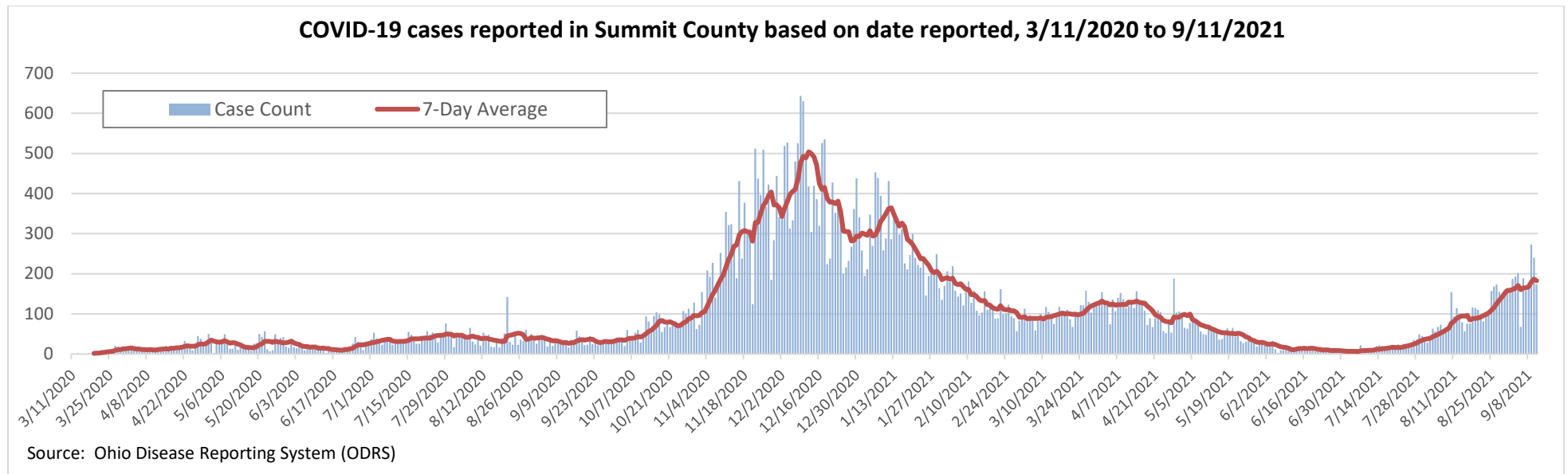
During the latest reporting period, Summit County AOCC status remained at **Sustained Hotspot**.

About this report: Data used in the report was obtained from three sources:

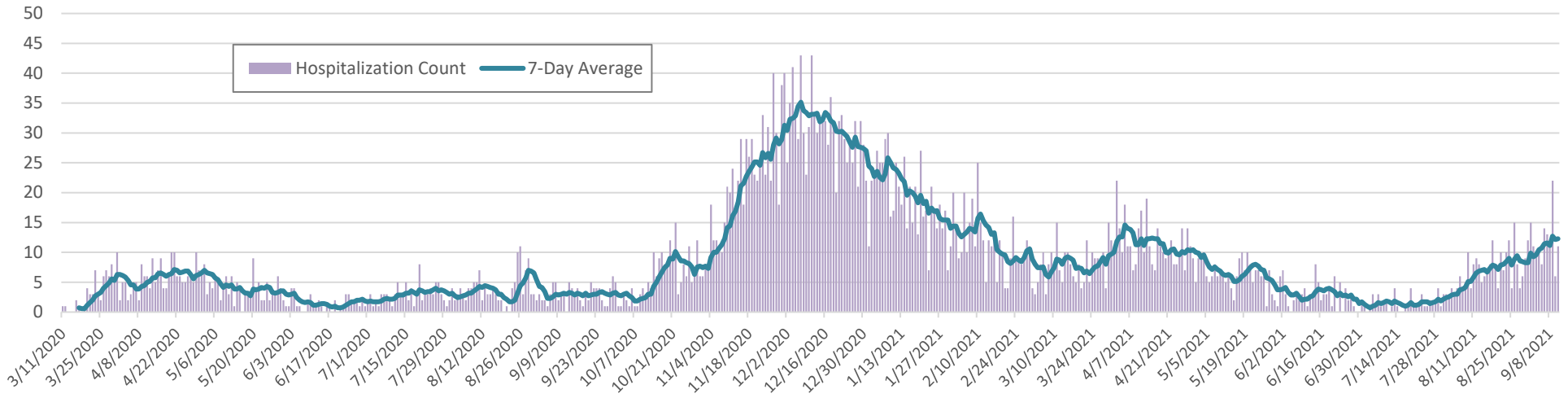
- 1) ODH COVID-19 Data Dashboard:** The State of Ohio COVID-19 Dashboard displays the most recent preliminary data reported to the Ohio Department of Health (ODH) about cases, hospitalizations and deaths in Ohio by selected demographics and county of residence. Data is reported to ODH via the [Ohio Disease Reporting System \(ODRS\)](#): The ODH data dashboard may be accessed here: <https://coronavirus.ohio.gov/wps/portal/gov/covid-19/dashboards/overview>
- 2) CDC Data Tracker and Community Profile Reports:** Using aggregated data from state and local health departments and healthcare facilities, the Centers for Disease Control and Prevention provides national, state and county level data on their Data Tracker website, and also release Community Profile reports twice a week. The CDC data tracker can be accessed here: <https://covid.cdc.gov/covid-data-tracker/#datatracker-home> , and the CDC COVID-19 Community Profile Reports can be downloaded from this website: <https://healthdata.gov/Health/COVID-19-Community-Profile-Report/gqxm-d9w9>
- 3) Summit County Public Health:** Data reported by Summit County Public Health is acquired from the Ohio Disease Reporting System (ODRS). In addition to this report, a COVID-19 data dashboard is available at: <https://www.scph.org/covid/maps-data> This dashboard is updated daily (Monday-Friday by 4:00 pm).

Numbers may change as updated reports are received. For questions, please contact Joan Hall at the Summit County Public Health Communicable Disease Unit (communicabledisease@schd.org). Report was issued on September 16, 2021.

APPENDIX. Daily COVID-19 case counts (by report date and symptom onset date), hospitalizations and deaths since the start of the pandemic

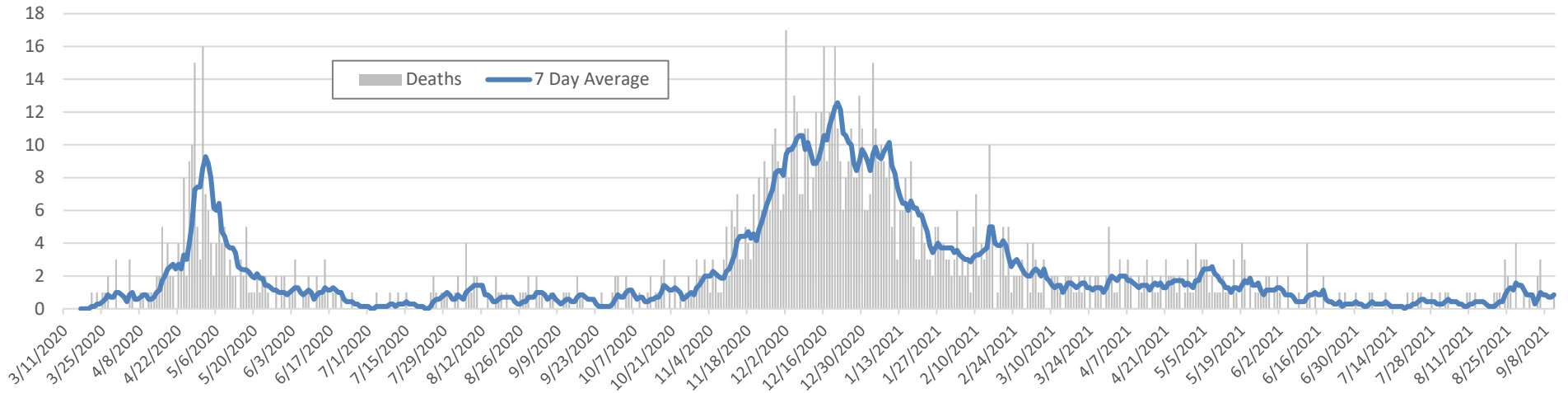


COVID-19 hospitalizations reported in Summit County, based on admission date, 3/11/2020 to 9/11/2021



Source: Ohio Disease Reporting System (ODRS)

COVID-19 deaths reported in Summit County, based on date of death, 3/11/2020 to 9/11/2021



Source: Ohio Disease Reporting System (ODRS)